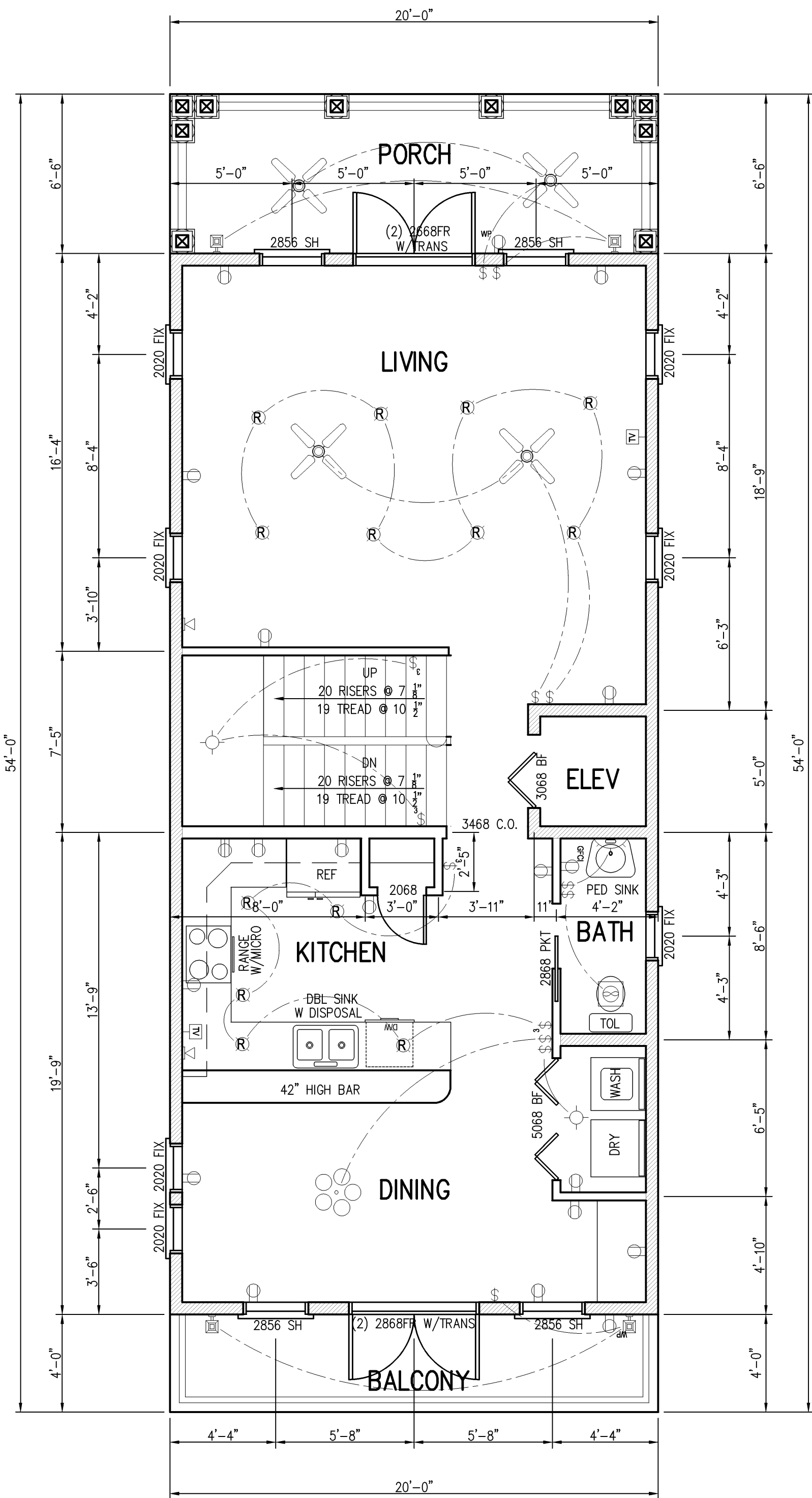


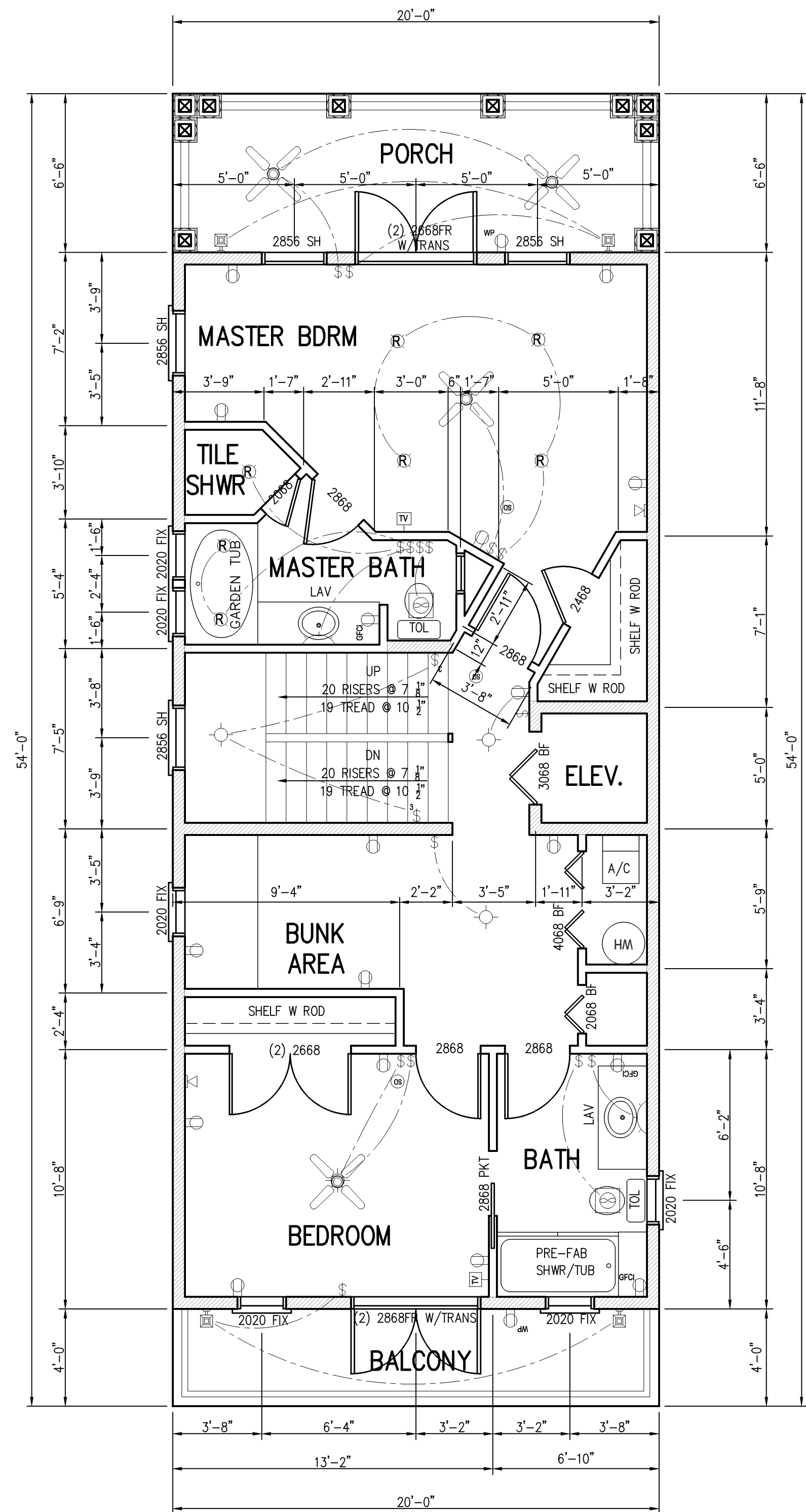
FIRST FLOOR PLAN

SCALE: 1/4"=1'-0"



SECOND FLOOR PLAN

SCALE: 1/4"=1'-0"



THIRD FLOOR PLAN

SCALE: 1/4"=1'-0"

WALL LEGEND

- 2x4 STUDS @ 16" O.C.
- 1ST FLR - (2) 2x6 STUDS @ 16" O.C.
- 2ND & 3RD FLR - 2x6 STUDS @ 16" O.C.
- (2) 2x8 STUDS @ 12" O.C. OR
- (2) 2x10 STUDS @ 16" O.C.
- TRIPLE JAMB FULL LENGTH STUDS
- QUADRUPLE JAMB FULL LENGTH STUDS
- QUADRUPLE JAMB FULL LENGTH STUDS
- SIMPSON PHD2 HOLDDOWN (OR EQUAL)

NOTE:
FOR WINDOW & DOOR DESIGN PRESSURES
SEE COMPONENT TABLE SHEET A.1

ELECTRICAL LEGEND

SYMBOL	DESCRIPTION	SYMBOL	DESCRIPTION
○	CEILING OUTLET, RECESSED	⊞	THERMOSTAT
□	WALL OUTLET	⊞	DOOR BELL
⊞	CEILING OUTLET W/ EXHAUST FAN, SURFACE MOUNTED	⊞	SMOKE DETECTOR
⊞	FLUORESCENT FIXTURE	⊞	DISTRIBUTION PANEL
⊞	DUPLEX RECEPTACLE	⊞	SINGLE POLE SWITCH
⊞	220 VOLT OUTLET, AMPERAGE AS NOTED	⊞	THREE POLE SWITCH
⊞	DUPLEX RECEPTACLE, WATER PROOF	⊞	DIMMER SWITCH
⊞	GROUND FAULT INTERCEPTOR	⊞	FLOOD LIGHT
⊞	TELEPHONE OUTLET	⊞	CEILING FAN
⊞	TELEVISION OUTLET		

CARR ENGINEERING & CONSTRUCTION, INC.
 Michael V. Carr P.E. License # 26675
 CIVIL & STRUCTURAL ENGINEERING CONSTRUCTION
 13305 Panama City Beach Parkway
 Panama City Beach, Florida 32407
 Phone (850) 230-8812 • Fax (850) 230-8519

Prepared by
Mitch Baxley
 17320 Panama City Beach Parkway, Suite 103
 Panama City Beach, Florida 32413
 (850) 235-0191

A NEW RESIDENCE FOR
CABANA VILLAS TYPE "C"
 CLEANDER DRIVE
 PANAMA CITY BEACH, FLORIDA

DESIGN BY	
MEM	
REVISIONS	
DATE OF ISSUE	1/29/06
CHECKED BY	
PROJECT NO	2005-035C
SHEET TITLE	FIRST, SECOND & THIRD FLOOR PLANS
SHEET NO	A.4